



Land and Sea Boot Toppers



In the school of Elizabeth Zimmerman, this is more of a suggestion than a pattern. It has not been test knit. People frequently ask me what they should do with the mini-skeins kits; here is what I did with mine, feel free to follow what I did, or use it as inspiration.

Toppers for Tall Boots are designed with a 13" calf in mind and are meant to be worn just below the knee. Toppers for Short Boots are meant to be worn from the ankle up and are designed with a 8" calf. Charts are given for each topper in each colorway. The pattern repeat for both toppers is relatively short, making it relatively easy to change the diameter of the toppers for a better fit. Be careful of yarn chicken! If you are adding repeats, consider removing a row or two of each color.

Gauge: 26st /4 inches colorwork after blocking on larger needles - there is nothing super fiddly in this pattern, ball-park gauge is fine.

Needles: US Size 1 and Size 3 (or size needed to get gauge - I consider myself a fairly tight knitter)

Yarn: One set (5 mini-skeins, approx 55 yds each) Upton Yarns Mini-Skeins

Color 1 Chatham Strait (Sea) or Slate/Flint (Land)

Color 2 Dawes Glacier (Sea) or Cress (Land)

Color 3 Wake (Sea) or Zucchini (Land)

Color 4 Cream (Sea) or Woodsmoke (Land)

Color 5 Lichen (Sea) or Charismatic Carrot (Land)

With Color 5 and smaller needles, cast on 60 (96) st. I like the Twisted German cast-on Join to work in round.



Round 1: Work in Color 5 in K1 P1 rib.

Next Round: Change to Color 1. Continue working on smaller needles in K1 P1 rib for 10 (15) rounds

Next Round: Change to larger needles and begin following chart for desired boot topper (charts are given for both toppers in both colorways - this may or may not make them easier to follow).

Next Round: Change to smaller needles and Color 4. Knit one round (this will make the color change in the subsequent Purl stitches of the rib of the next round look a little neater). Follow charts for next 74 (38) rounds.

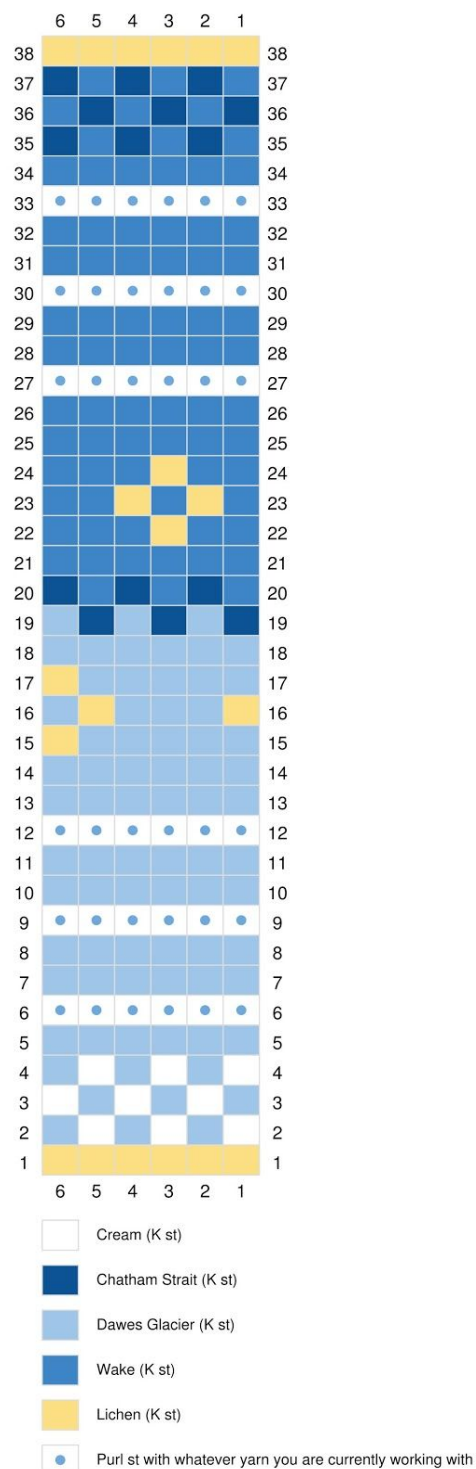
Next Round: Still using smaller needles and color 4, work K1 P1 rib for next 9 (14) rounds.

Next Round: Switch to Color 5, continue to work round in K1 P1 rib.

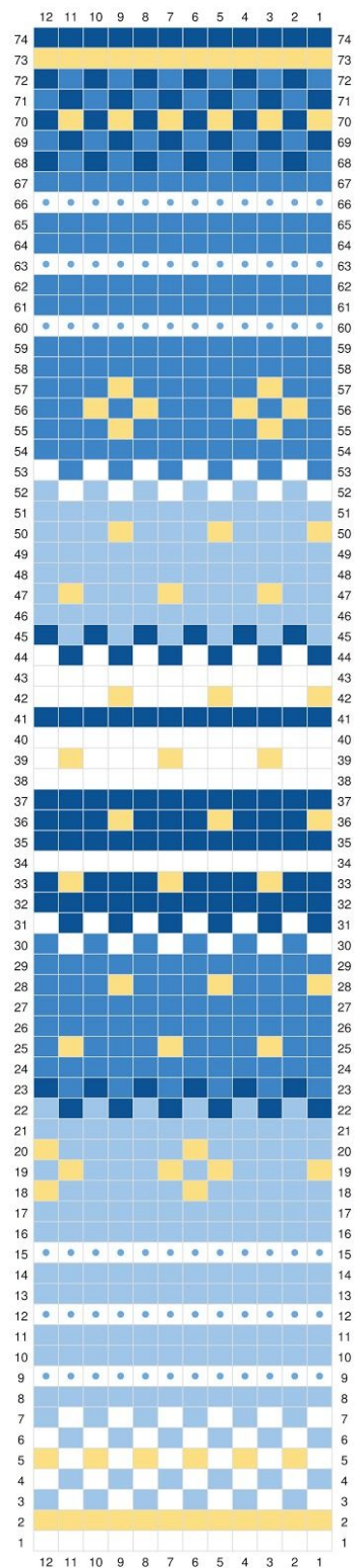
Next Round: Bind-off loosely using Color 5 and Jeny's Surprisingly Stretchy Bind Off

Charts for SEA mini skein kit

Topper for Tall Boots

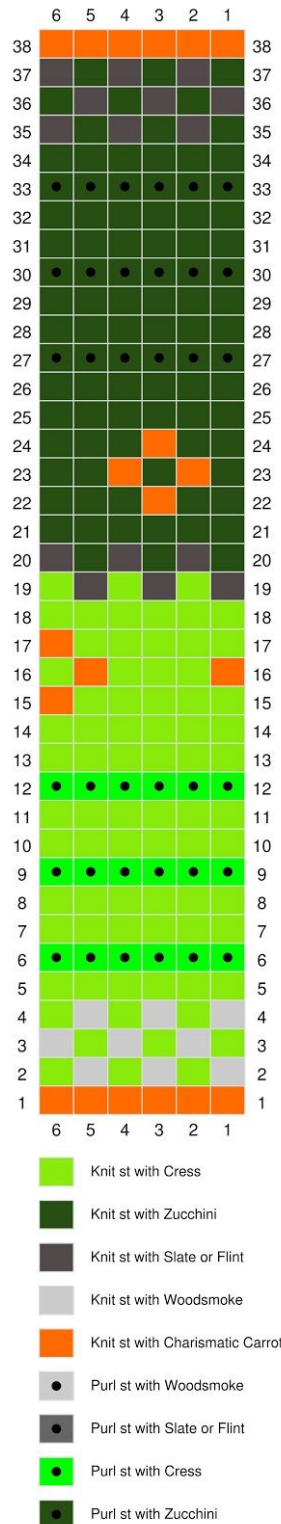


Topper for Short Boots



Charts for LAND mini skein kit

Topper for Tall Boots



Topper for Short Boots

